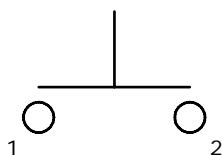


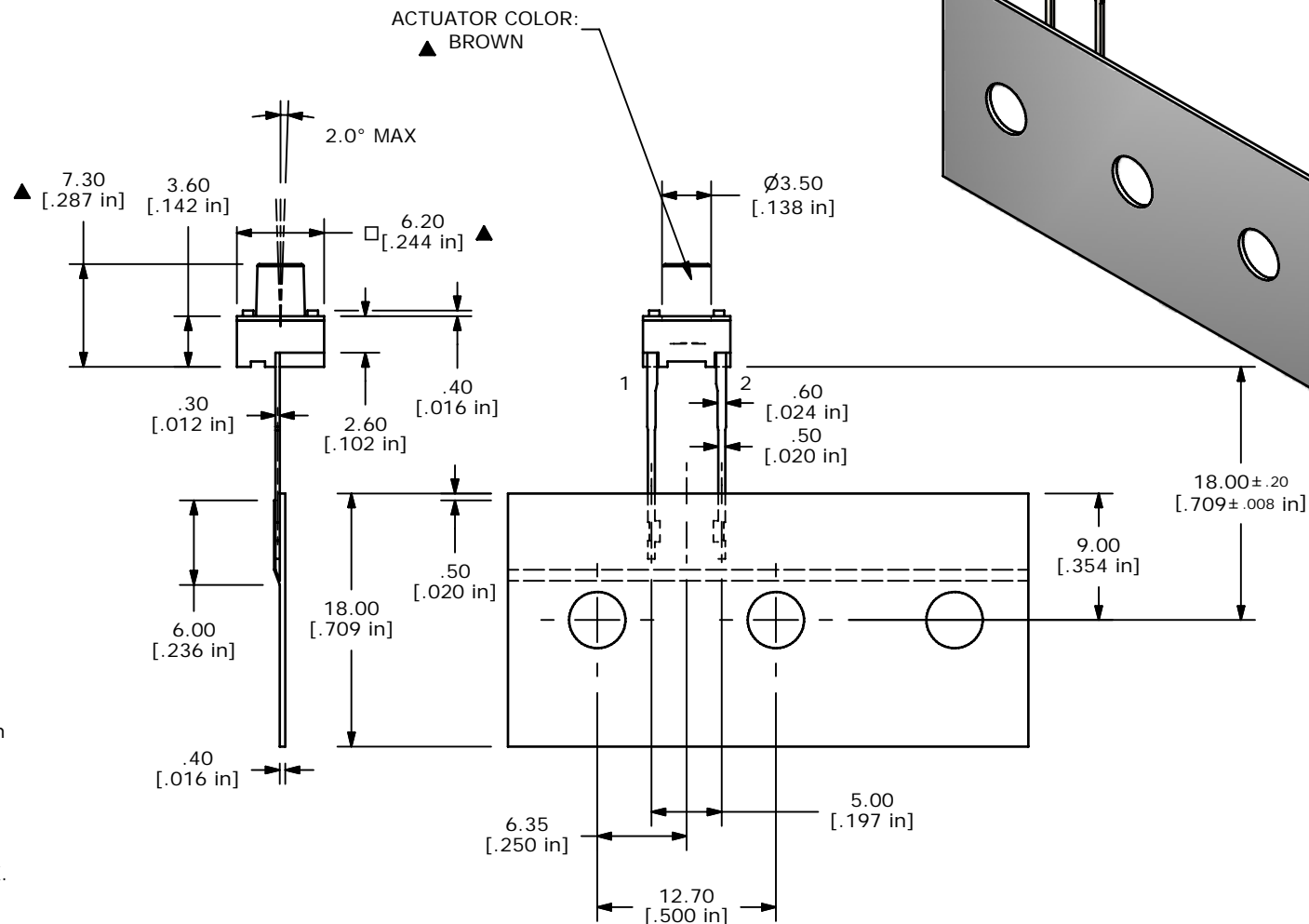
PC MOUNTING



CIRCUIT SPST

NOTES:

1. ALL DIMENSIONS IN MM [INCH]
2. GENERAL TOLERANCE: X.X±0.4mm
X.XX±0.25mm
3. CONTACT RATING: 50mA @ 12VDC
- ▲ 4. CONTACT MATERIAL: SILVER
- ▲ 5. OPERATING FORCE: 100±50gf
6. TRAVEL: 0.25 +0.2/-0.1mm
7. CONTACT RESISTANCE: 100mΩ MAX.
8. ELECTRICAL LIFE: 100,000 CYCLES
9. PACKAGING: 1,000 PCS RADIAL
10. 2002/95/EC (ROHS) COMPLIANT
11. ▲ DENOTES CRITICAL PRAMETERS.



| | | | | |
|------------------|-----------------|-------|-------------|-------|
| TITLE TL59EF100Q | | | | |
| SCALE 2:1 | DATE 10/12/2012 | DR rc | DWG P010561 | REV B |

| | | | | |
|--|--------|-------------|----------|----|
| B | 20823 | REDRAWN | 10/12/12 | rc |
| REV | PCR NO | DESCRIPTION | DATE | BY |
| THE INFORMATION CONTAINED IN THIS DOCUMENT IS PROPRIETARY TO E-SWITCH AND IS NOT TO BE COPIED OR TRANSFERRED | | | | |